



Jenna J. Slabaugh  
Paralegal

303-858-1800  
jslabaugh@wbapc.com

December 13, 2024

**VIA ELECTRONIC SUBMISSION  
AND ELECTRONIC MAIL**

Division of Local Government  
*E-filed via [www.dola.colorado.gov/e-filing](http://www.dola.colorado.gov/e-filing)*

Douglas County Clerk and Recorder  
301 Wilcox Street  
Castle Rock, CO 80104  
clerk@douglas.co.us

Douglas County Assessor  
301 Wilcox Street  
Castle Rock, CO 80104  
assessors@douglas.co.us

**Re: Lanterns Metropolitan District No. 4 (LGID#:67128)  
Map Filing Pursuant to §32-1-306, C.R.S. – No Change in Boundaries**

To Whom It May Concern:

Section 32-1-306, C.R.S., requires special districts to provide a current, accurate map of their boundaries to the Division of Local Government, County Clerk and Recorder and County Assessor by January 1 of each year. This letter is to inform you that the map that is currently on file with your office for the above-referenced District is the most current and accurate map. A copy of the current map is attached for your convenience.

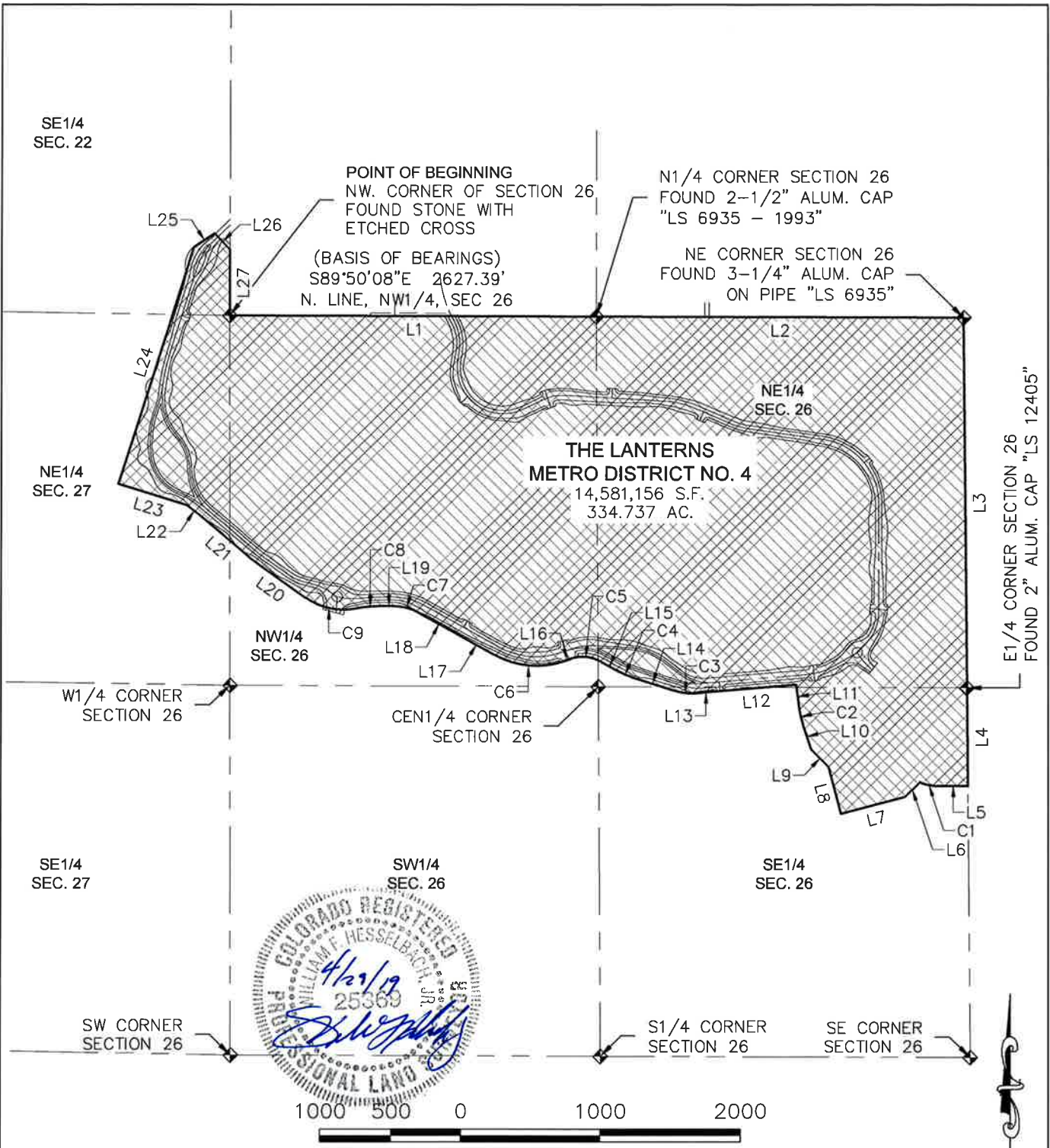
Should you have any questions, please do not hesitate to contact me.

Sincerely,

WHITE BEAR ANKELE TANAKA & WALDRON  
Attorneys at Law

Jenna J. Slabaugh, Paralegal

Enclosure



SCALE: 1" = 1000'

METROPOLITAN DISTRICT NO. 4 CONTAINS 14,581,156 SQUARE FEET OR (334.737 ACRES) MORE OR LESS. This illustration does not represent a monumented survey. It is intended only to depict the attached legal description.

**THE LANTERNS  
METROPOLITAN DISTRICT NO. 4**

**BOUNDARY EXHIBIT**



10333 E. Dry Creek Rd.  
Suite 240  
Englewood, CO 80111  
Tel: (720) 482-9526  
Fax: (720) 482-9546