



Jenna J. Slabaugh
Paralegal

303-858-1800
jslabaugh@wbapc.com

December 13, 2024

**VIA ELECTRONIC SUBMISSION
AND ELECTRONIC MAIL**

Division of Local Government
E-filed via www.dola.colorado.gov/e-filing

Douglas County Clerk and Recorder
301 Wilcox Street
Castle Rock, CO 80104
clerk@douglas.co.us

Douglas County Assessor
301 Wilcox Street
Castle Rock, CO 80104
assessors@douglas.co.us

**Re: Lanterns Metropolitan District No. 5 (LGID#:67129)
Map Filing Pursuant to §32-1-306, C.R.S. – No Change in Boundaries**

To Whom It May Concern:

Section 32-1-306, C.R.S., requires special districts to provide a current, accurate map of their boundaries to the Division of Local Government, County Clerk and Recorder and County Assessor by January 1 of each year. This letter is to inform you that the map that is currently on file with your office for the above-referenced District is the most current and accurate map. A copy of the current map is attached for your convenience.

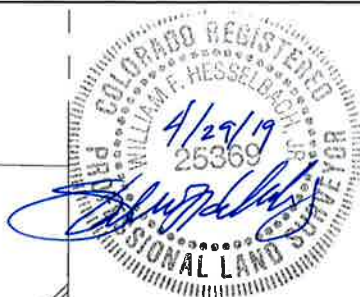
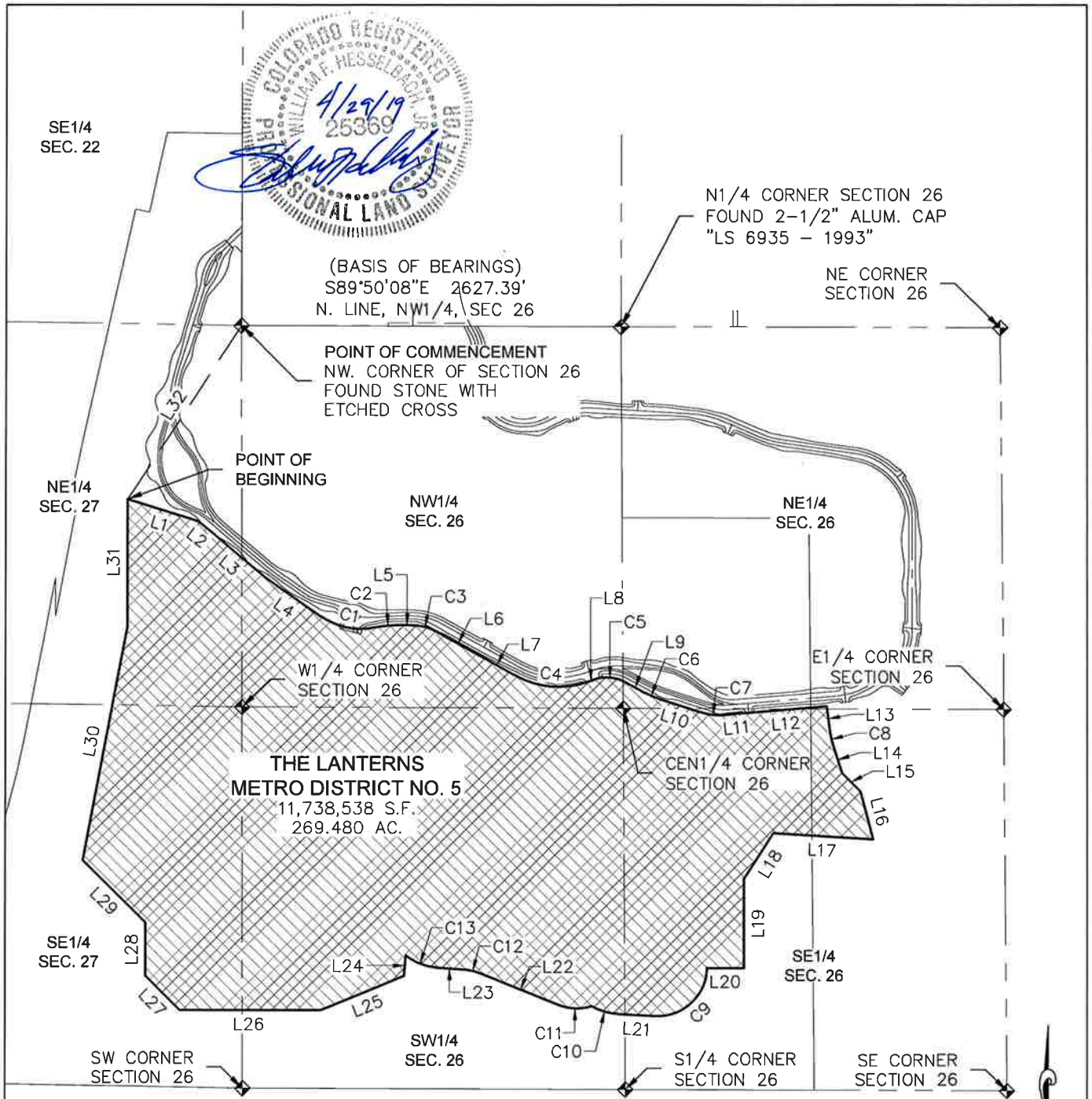
Should you have any questions, please do not hesitate to contact me.

Sincerely,

WHITE BEAR ANKELE TANAKA & WALDRON
Attorneys at Law

Jenna J. Slabaugh, Paralegal

Enclosure



**THE LANTERNS
METRO DISTRICT NO. 5**
11,738,538 S.F.
269.480 AC.

1000 500 0 1000 2000

SCALE: 1" = 1000'

METROPOLITAN DISTRICT NO. 5 CONTAINS 11,738,538 SQUARE FEET OR (269.480 ACRES) MORE OR LESS.
This illustration does not represent a monumented survey. It is intended only to depict the attached legal description.

**THE LANTERNS
METROPOLITAN DISTRICT NO. 5**

BOUNDARY EXHIBIT



10333 E. Dry Creek Rd.
Suite 240
Englewood, CO 80111
Tel: (720) 482-9526
Fax: (720) 482-9546