



Emilee D. Hansen
Paralegal

303-858-1800
ehansen@wbapc.com

December 31, 2024

**VIA ELECTRONIC SUBMISSION
AND ELECTRONIC MAIL**

Division of Local Government
E-filed via www.dola.colorado.gov/e-filing

Douglas County Clerk and Recorder
301 Wilcox Street
Castle Rock, CO 80104
clerk@douglas.co.us

Douglas County Assessor
301 Wilcox Street
Castle Rock, CO 80104
assessors@douglas.co.us

**Re: Pinery Commercial Metropolitan District No. 2 (LGID#:65485)
Map Filing Pursuant to §32-1-306, C.R.S. – No Change in Boundaries**

To Whom It May Concern:

Section 32-1-306, C.R.S., requires special districts to provide a current, accurate map of their boundaries to the Division of Local Government, County Clerk and Recorder and County Assessor by January 1 of each year. This letter is to inform you that the map that is currently on file with your office for the above-referenced District is the most current and accurate map. A copy of the current map is attached for your convenience.

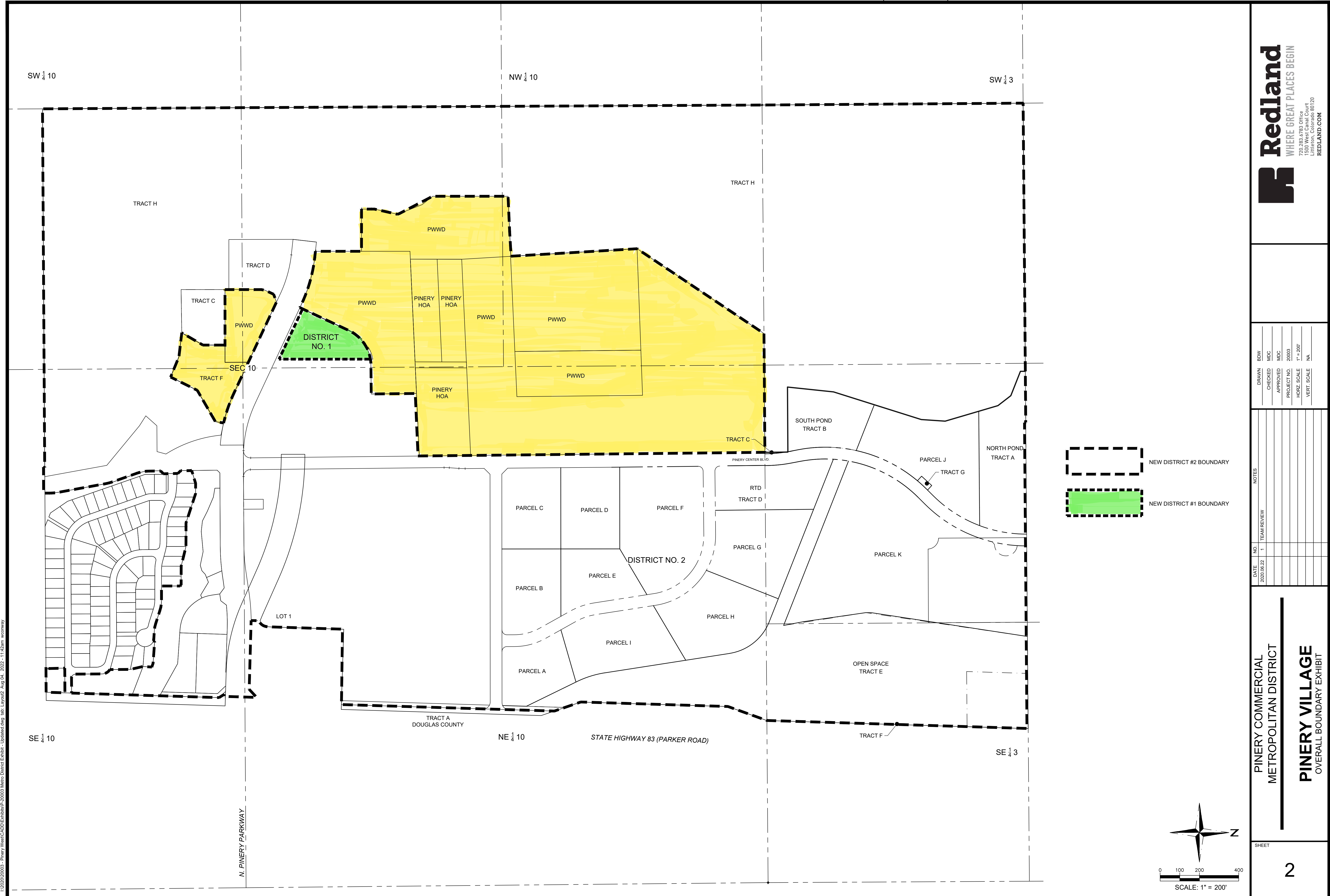
Should you have any questions, please do not hesitate to contact me.

Sincerely,

WHITE BEAR ANKELE TANAKA & WALDRON
Attorneys at Law

Emilee D. Hansen, Paralegal

Enclosure



I:\2020\2003 - Pinery West\CADD\ExhibitP-2003 Metro District Exhibit - Updated.dwg Job: Layout2 Aug 04, 2022 - 11:42am wcmway



DRAWN	BDW
CHECKED	MDC
APPROVED	MDC
PROJECT NO.	20003
HORIZ. SCALE	1" = 200'
VERT. SCALE	NA

DATE	NO.	TEAM/REVIEW	NOTES
2020/08/22	1		

PINERY COMMERCIAL
METROPOLITAN DISTRICT
PINERY VILLAGE
OVERALL BOUNDARY EXHIBIT